



Hale Family Association

www.halefamilyassociation.com
Box 1166 Conway,
New Hampshire 03818

Volume 12
Number 2

March 2007

HFA Addresses

Pres – Arthur Hale, Box 1166,
Conway, New Hampshire,
03818
e-mail art@ncia.net

VP – Shirley G. Smith,
e-mail jsggs@aol.com

Sec/Trea Fred Hale, 65 Lake-
mans Ln, Ipswich, Ma 01938
e-mail f_hale@comcast.net

Member at Large – Betsy
Walega, 51 Wheeler Road,
e-mail bwall1@tellink.net

HFA WEBSITE
halefamilyassociation.com
WebMaster [bob-
chale@halefamilyassociation.
com](mailto:bob-chale@halefamilyassociation.com)

Presidents Message

It looked as though Old Man Winter was loosening his grip and spring was on the way. This morning (April 5) I am looking at 12 ½ inches of snow where the ground was just about bare except where the snowplow had piled it and some on the Northern side of the house where it slid off the roofs.

It is time to consider the up-coming Family re-union. Fred and I have talked about holding it here in Conway, New Hampshire. Conway abuts the Major Samuel Hale Grant, also known as Hale's Location.

Some of the grant is National Forest land, and some is being developed with a nine-hole golf course and a lot of quite nice homes. The area also has a very nice hotel in the Northeastern corner of the Location right under the White Horse Ledge called the White Mountain Hotel and Resort.

We are tentatively scheduling the re-union the second weekend of August, that will be **Friday Aug. 10 through Sunday Aug. 12**. We are planning on holding our meeting at the Conway Historical Society Museum Building on Saturday the 11th. We thought we might visit some of the local Hale Cemeteries in the area, and then possibly take a tour of the Hale's Location to look at the development, then perhaps have a group dinner at the White Mountain Hotel afterward. I have been to the hotel and drop in dinner guests are encouraged. There are three choices for dining, the Tavern with prices from \$5.00 upward to \$11.00, the Friday night buffet with prices from \$8.50 upward to \$28.00, and the regular menu with prices from \$9.00 to \$13.00. Bed and breakfast package plans for weekends run from \$75.00 to \$110.00 summer and early fall from Sunday through Thursday, and \$90.00 to \$120.00 for the same periods for weekend rates. There are also many other hotels and motels in the area along with quite a variety of restaurants.

We are trying to get a slate of Officers put together for the up-coming term. We will let you know what the slate will be as soon as we can get them filled.

Hoping to see many of you at the meeting.

Arthur E. Hale
President

Secretaries musings

As we all are aware, Rev John Hale was married three times.

Wife #1 Rebeckah Byley/Byles, of Salisbury and Ipswich Ma. They were married 1664 in Ipswich, Rebechah 's father Byley, died in Salisbury and her mother married Deputy Governor Samuel Symonds of Ipswich. She died 1683. This union produced three children: - 1) John born 1665, died 1690. 2) Rebecca born 1666, she died 1681, 3) Robert (known as Dr. Robert) born Nov 1668, died 1719.

Wife #2 Sarah Noyes, of Newbury, Ma. Sarah, born March 1656, daughter of James Noyes. They were married March 1684, in Newbury, Ma. She died 1697. This union produced four Children: - 1) James born 1885, died 1742, Ashford, Ct. 2) Samuel born 1687, buried Newbury, Ma. 3) Joanna Hale, born 1689, later Married her 1st cousin _____Noyes. 4) John #2 born 1692.

Wife #3 Elizabeth Somerby Clark. Elizabeth was the daughter of Henry Somerby & Judith Greenleaf who later married Tristram Coffin Jr. Elizabeth was born 1646 in Newbury, Ma, married Nathaniel Clark , and produced 11 Children. Nathaniel Clarke died on the return voyage of the 1690 Louisburg Conflict. Elizabeth and Rev John were Married in Newbury 1697, and she Moved to the Beverly house with her Eight minor children

The Hale house in Beverly, and the house Where Elizabeth was born are shrouded in mystery.

The Hale House in Beverly
Mystery 1 – How old is the Hale House, and was it moved?

A descendants of Rev Hale, Robert Hale Bancroft, in 1903, wrote about his belief that the original house was replaced, some time after 1694. His basis, two notations in the History of Beverly by Edwin Stone, plus an assertion of his own.

1st notation – In 1694, the town gave the house and original two acres of land to Rev Hale to pass on to his heirs. Earlier he had been given use of the house until he died.

2nd notation - In 1695, The Town voted to allow Mr. Hale “to cut enough timber to build ½ a house”.

Assertion: That Rev Hale dismantled his house, moved down the hill (Watch Hill), and rebuilt the house across the street.

Fact 1:

In 1694, Rev. John Hale was given the original two acres plus the parish house to hold forever, and pass it on to his heirs. Since 1692, Rev John Hale and his wife Sarah were living in a four-room house with 5 Children. Sickly 25-year-old John#1 had died in 1690. 27 year old Dr. Robert from Rev Hale’s first marriage, is already a practicing physician, Rev Hale’s second family 9 year old James, 7 year old Samuel, 5 year old Joanna, and 2 year old John#2. Reverend John Hale officially acquired title to the home that he has lived in for thirty years in 1694. A family composed of a Minister, a practicing Physician, and 4 small children would be very crowded in a four-room house, thus the desire to have more room for his families .

Fact 2:

Robert Hale Bancroft wrote in his 1903 Journal & History, “I am glad To think that as our old house was not built until after 1692 when the witchcraft tragedy was over, no painful associations can connect it with the most terrible episode in New England History”



Present Hale House w/ 1745 gambrel addition which replaced the 1695 lean-to & current road location

It is interesting to note that the original 1657 contract for building the parsonage called for a building thirty-eight feet long, by seventeen feet wide. With a chimney with three flues two below, and one in the eight by eight study above the porch. With the house completed in 1657/58, and occupied by Jerimiah Hubbard who was to serve as “teacher” The completed house faced south, with the road to Manchester a few feet from the front door.

In 1664, Rev. John Hale was appointed to replace Mr. Hubbard, and in 1665, the house and two acres of land were given to Rev. Hale for his use “so long as he continues to work for the ministry”.

Rev Hale immediately started to purchase land contiguous to the original two acres, and by 1674, he owned his own 3-½ acres plus the parsonage lot of two acres.

In 1687, Lightening struck the chimney while Rev Hale and Deacon Hill were in the room, causing severe damage to the chimney top and one side – both Rev Hale & Deacon Hill were injured but not seriously.

In 1695 after acquiring final legal possession of the house, he built the lean-to addition on the North.



Fact 3:

The present house measures thirty-eight feet long, and seventeen feet wide. A curious duplication of measurement if you were building a new larger house.

Fact 4:

The original house faced south a few feet from the road to Manchester, if it was moved “down Watch Hill” as Robert Hale Bancroft asserts, the road would then be on the North side of the House. If that was the case, how do we explain the prolonged court case in 1702 where the Road to Manchester was changed to about 30 feet to the north of the present Hale House.

In 1719, Dr Robert Hale died. Elizabeth Hale, his wife later married John Gilman of Exeter, NH, and in 1722, her dower rights were enumerated as five acres of land, “The lower room and chamber overIt in the westerly end of the house and the back Leentue room and the chamber adjoining to the said lower room, one third of the whole cellar plus barn and free access to all. Elizabeth now married to Gilman and living n Exeter never lived in the house again.

Several Architects have studied and examined the house, without a clear-cut decision.



Hale House about 2002



Hale Farm Beverly circa 1880

The Somersby/Coffin House in Newbury
Mystery 2 – How old is the Somersby/Coffin House, and who built it?

Reverend John Hale married third, Elizabeth Somersby Clarke, widow of Nathaniel Clarke who served with Rev. John Hale in the excursion of 1690 to Louisburg Nova Scotia, and died on the return ship voyage in 1690. Elizabeth was the daughter of Henry Somersby and Judith Greenleaf, and was born in the house her father built 1643

Historic New England, formerly know as SPNES (Society for the preservation of New England Antiquities) currently owns the Tristram Coffin house of Newbury.

Various sources list the house as being built from 1643 to as late as 1668.

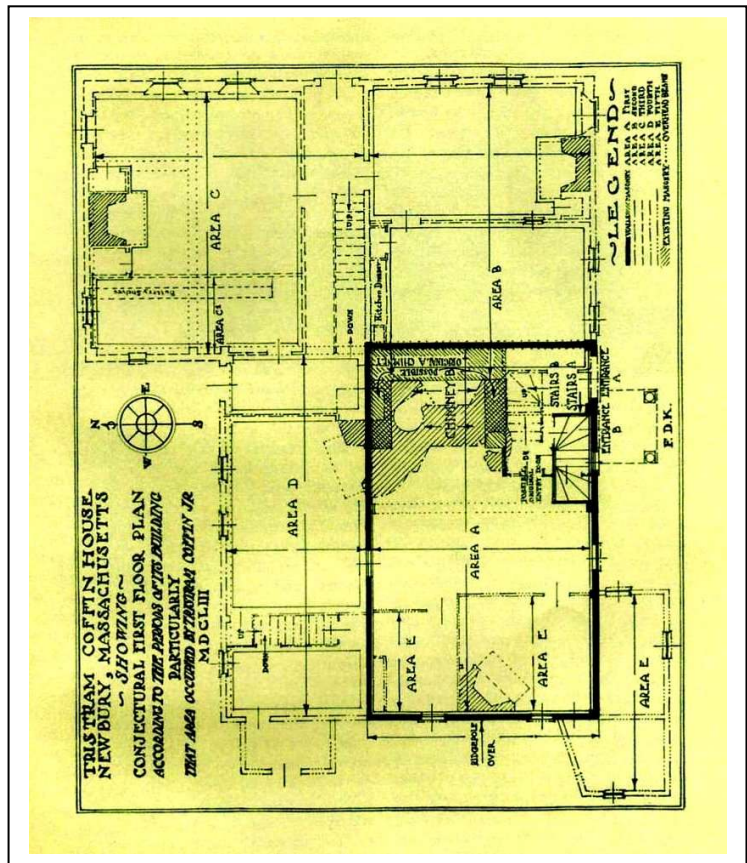
Various stories abound, but a few facts seem consistent: Henry Somersby Married Judith Greenleaf in 1643, and they had four children Sarah born 1644, married John Hale, son of Thomas in 1663, Elizabeth born 1646 married Nathaniel Clark 1663, and Married 2nd Rev John Hale in 1697, John Born 1648, died young, Danyel born 1650 killed at age 21 by Indians.

During Henry and Judith’s marriage several notations are found in the Quarterly Court Records. 1) Henry Somersby was allowed to tend the Ferry to Salisbury – this was assumed to be in the area now knows as Somersby Landing”. 2) In 1650 Henry was given permission to operate an Ordinary when Mr. Greenleaf gives it up.3) I a history of Newbury, Tristram Coffin Jr. was listed as an apprentice on Mr. Somersby’s Ferry. 4) In 1652 Henry Somersby died, and his estate was probated, and Judith petitioned the Court that her son Danyel might have six acres in the little field, and Half the Marsh and 5 Li at age 16..

In 1652, 32 year old Judith married 21 year old Tristram Coffin Jr. At this stage, Judith had inherited the Ferry Business, as well as the Ordinary that she & Henry Somersby had taken over from her father in 1652.

In 1652, a Quarterly Court notation allows Tristram to continue the Ferry to Salisbury. Also a further Quarterly Court notation “Trisram Coffins wife presented for selling beer for three pence a quart. Proved, by testimony of Samuel Moore, that six bushels of malt were put into the hogshead. DISCHARGED. The following is the same incident recorded in the Book “A Sketch of Newbury” by Joshua Coffin

September. ‘Tristram Coffyn’s wife Dionis was presented for selling beer,’ at his ordinary in Newbury, ‘for three pence a quart.’ Having proved ‘upon the testimony of Samuel Moores, that she put six bushels of malt into the hogshead she was discharged.’ †
 The law, which she was supposed to have violated, was passed in 1645, and is as follows, namely:
 ‘Every person licensed to keep an ordinary, shall always be provided with good wholesome beer of four bushels of malt to the hogshead, which he shall not sell *above* two pence the ale quart on penalty of forty shillings the first offence and for the second offence shall lose his license.’
 Goodwife Coffyn probably reasoned thus:
 ‘As four is to two, so is six to three. I’ll have better beer than my neighbours and be paid for it. A fig for the law.’



+++++
 The small darker square is the original floor plan of the house where Elizabeth Somersby Clark was born.



The following was received from Cousin Quincy Abbot Associated Press

April 13, 2007

CHAPLIN, Conn. -- A bronze statue of Nathan Hale stolen from the Revolutionary War hero's family homestead has been found near an eastern Connecticut river, police said Friday.

The 3-foot statue was stolen in late March or early April from the Nathan Hale Homestead in Coventry, where it was either sawed off or broken at the ankles.

An anonymous message left Thursday night on a police tip line led officers to the Natchaug River in Chaplin, where they recovered the statue near a fishing area known as Diana's Pool.

"It's in good shape, except that it's missing its feet. We're obviously going to have a restoration process," said Rochelle Simon, a spokeswoman for the Antiquarian and Landmarks Society, which owns Hale homestead.

Hale was born June 6, 1755, and was a captain in the Army during the American Revolution. Considered America's first spy, Hale was caught by the British and hanged.

He is widely quoted as saying, "I only regret that I have but one life to lose for my country."

Police had the Hale statue in their custody Friday and planned to return it to the homestead, which was closed at the time of the theft and reopens for the season on May 12. The investigation into the theft remained open Friday.

An anonymous benefactor had offered to fund a \$1,000 reward for the society for information leading to the statue's return, but it had not been determined Friday who, if anyone, qualifies to claim the money.

Check out these interesting web sites:

<http://etext.virginia.edu/salem/witchcraft/Essex/> text of the Salem Ma, Ipswich Ma Hampton, Exeter & Portsmouth early court records

<http://jefferson.village.virginia.edu/salem/17docs.html> Early Witch Trial Documents etc

http://books.google.com/books?id=FHZoBM9HefUC&pg=PR1&lpg=PR1&dq=history+of+newbury&source=web&ots=Wd-5pHiDej&sig=LaduzEKOFmm28XaQ_4AG3W4Ozas#PPA59,M1 Coffins History of Newbury

<http://www.rootsweb.com/~maessex/VitalRecords/EssexCounty/Newbury/index.html> Vital Records Newbury Ma (Most early Mass towns also have their vital stats up to 1850 on line